

INSTALLATION INSTRUCTIONS

DESCRIPTION: Side Mirror Kit and Side Mirror Mount Kits

PART NUMBER: B4M-F62A0-V0, B4J-F6206-V0, B4J-F6206-T1 and B4M-F6206-V0

MODEL: See Table Below



Fitment Table

Part Number	Description	Fitment
B4M-F62A0-V0	Side Mirror Kit	ALL SXS
B4J-F6206-V0	Side Mirror Mount Kit	2021+ Wolverine
B4J-F6206-T1	Side Mirror Clamp Kit	ALL SXS
B4M-F6206-V0	Cab Door Mirror Mount Kit	2021+ Wolverine with Cab Doors Installed

WARNING

Please read and understand these instructions completely before installation to avoid possible injury, or damage to the accessory or vehicle.

NOTICE:

Installation of this kit requires a torque wrench and should be performed by an authorized Yamaha dealer or a qualified mechanic.

WARRANTY INFORMATION:

In the United States, see your Yamaha dealer for a copy of the Yamaha Genuine Parts and Accessories Limited Warranty.

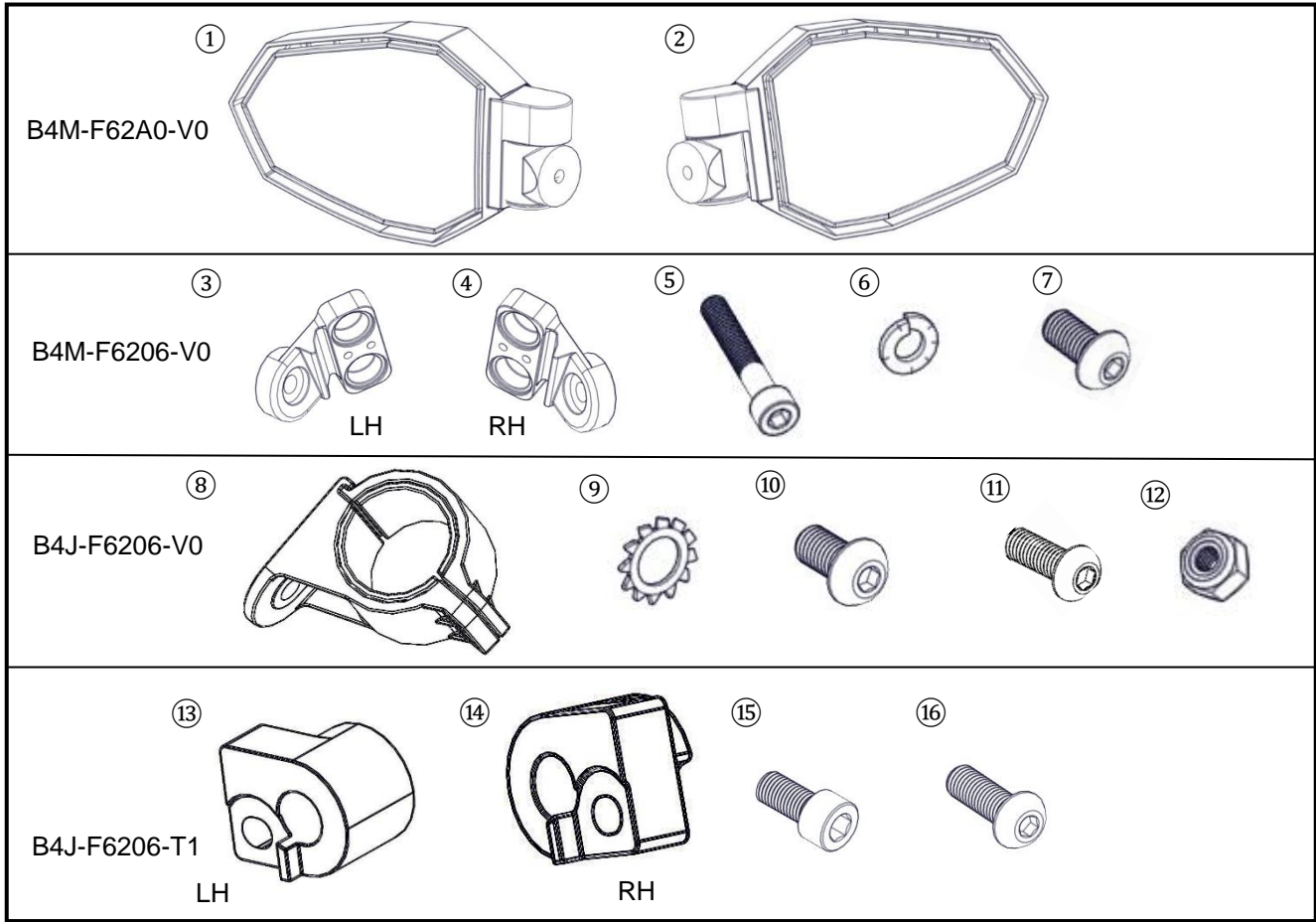
DEALER OR INSTALLER:

These instructions contain important information for future reference and *must* be given to the customer.

PARTS LIST:

No.	Part Number	Description	Qty
--	B4M-F62A0-V0	Side Mirror Kit	--
①	*	Left Side Mirror Assembly	1
②	*	Right Side Mirror Assembly	1
--	B4M-F6206-V0	Side Mirror Mount Kit	--
③	*	Left ROPS Bracket	1
④	*	Right ROPS Bracket	1
⑤	90110-06017	M6x35mm Socket Head Bolt	4
⑥	90204-06W01	M6 Split Lock Washer	4
⑦	90111-10041	M10x20mm Button Head Bolt	2
--	B4J-F6206-V0	Side Mirror Clamp Kit	--
⑧	*	Mirror Bracket	2
⑨	92907-10400	M10 Toothed Washer	2
⑩	90111-10041	M10x20mm Button Head Bolt	2
⑪	92017-06020	M6x20mm Button Head Bolt	4
⑫	95617-06100	M6 Nylon Lock Nut	4
--	B4J-F6206-T1	Cab Door Mirror Mount Kit	--
⑬	*	Left Cab Door Mount	1
⑭	*	Right Cab Door Mount	1
⑮	91317-10020	M10x20mm Socket Head Bolt	2
⑯	92017-10030	M10x30mm Button Head Bolt	2

* Part supplied with kit only and not available separately.



PREPARATION:

- Place the vehicle on a secure and level surface.
- Set the parking brake.
- Clean the mounting surfaces before beginning installation.

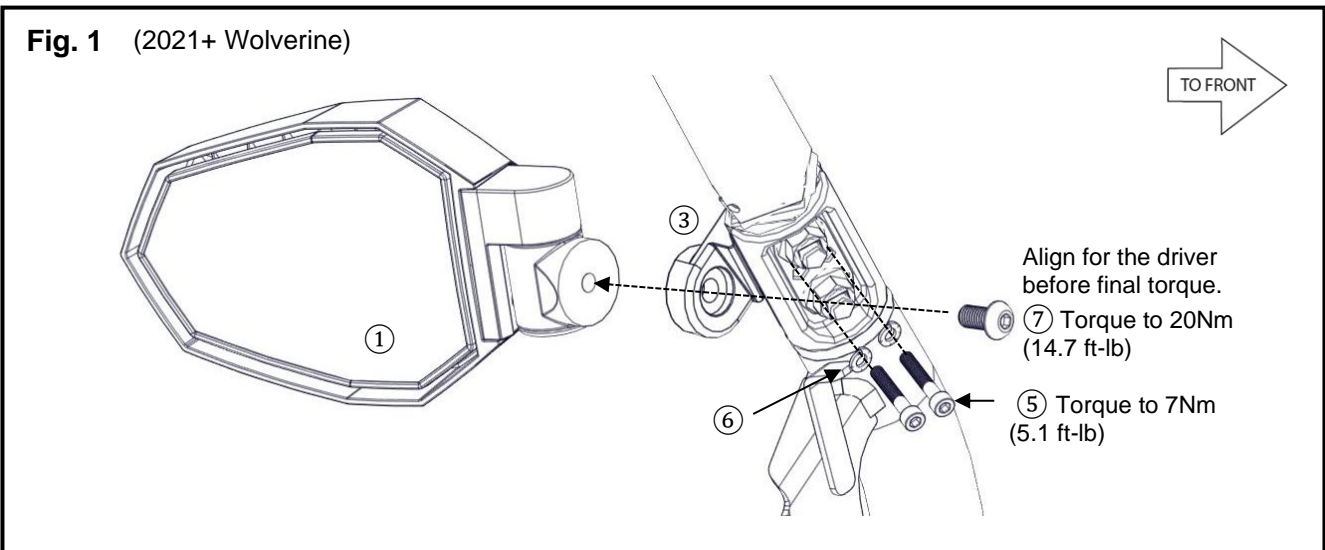


Fig. 2 All SXS with 2" ROPS Tubing

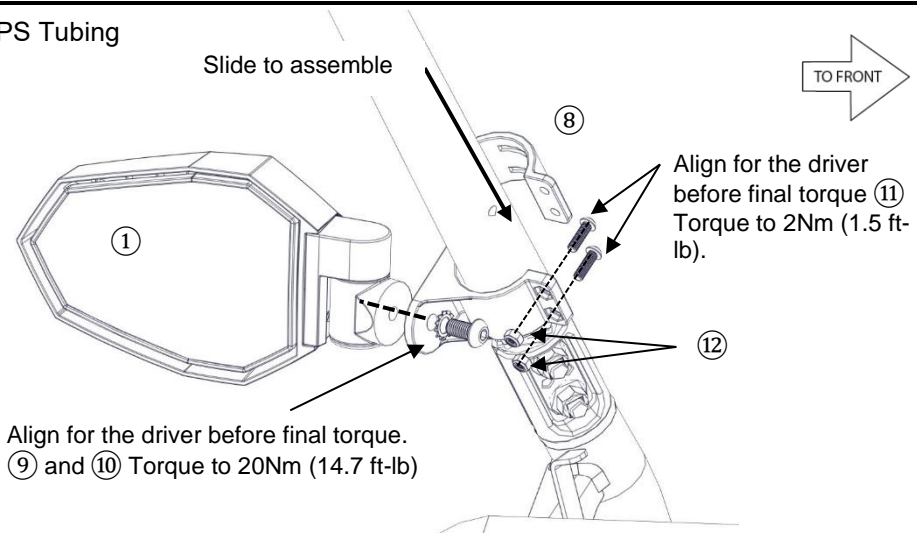


Fig. 3 2021+ Wolverine with Cab Doors

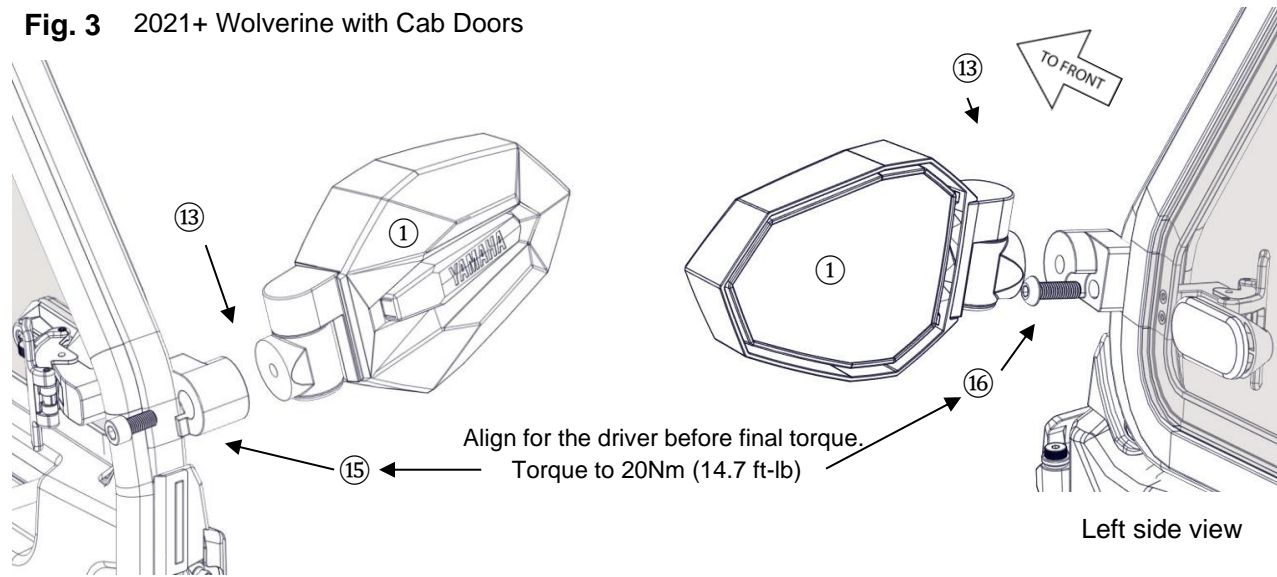


Fig. 4 YXZ with 1.5" ROPS Tubing

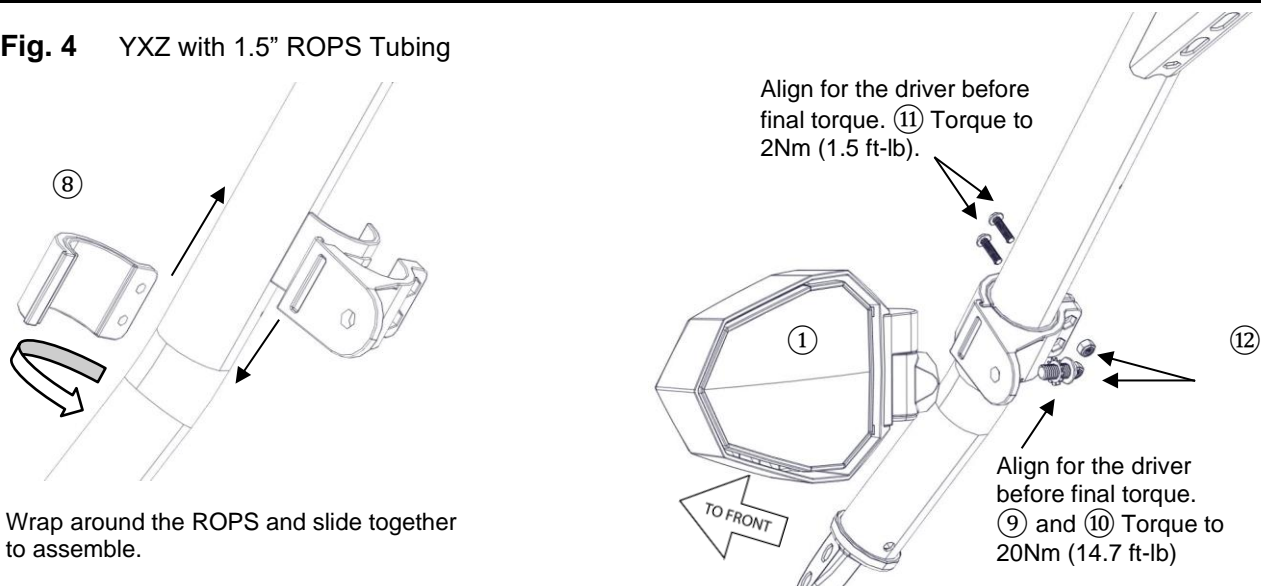


Fig. 5

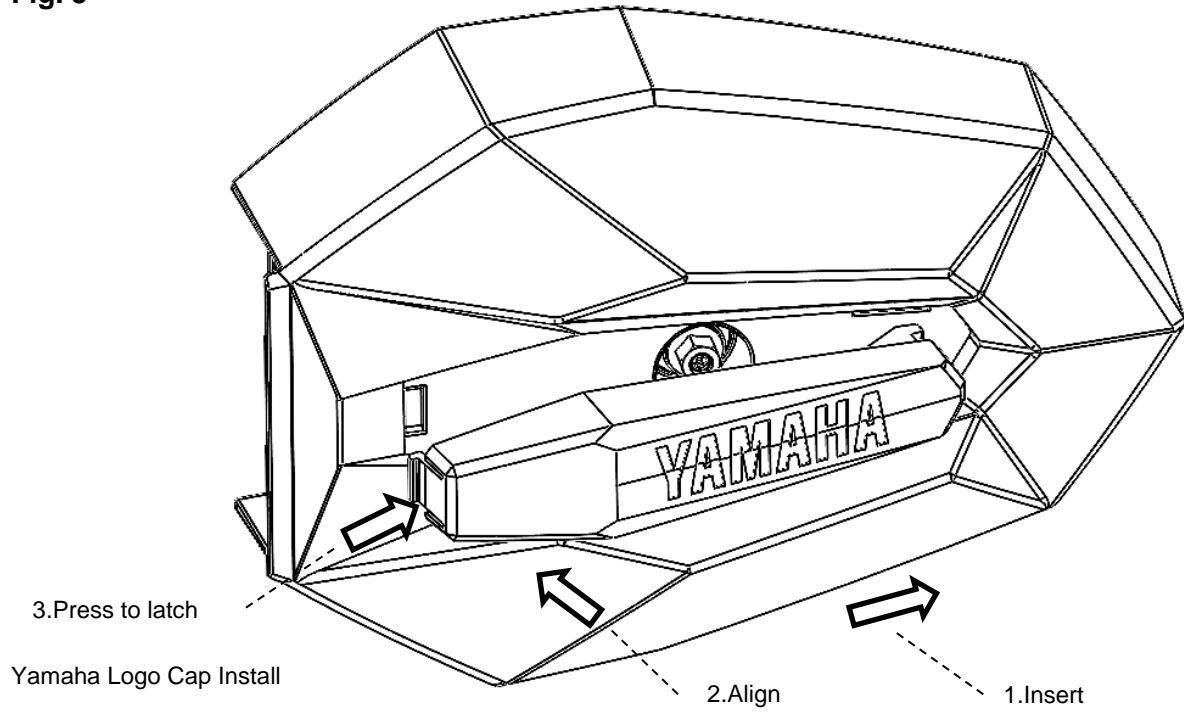
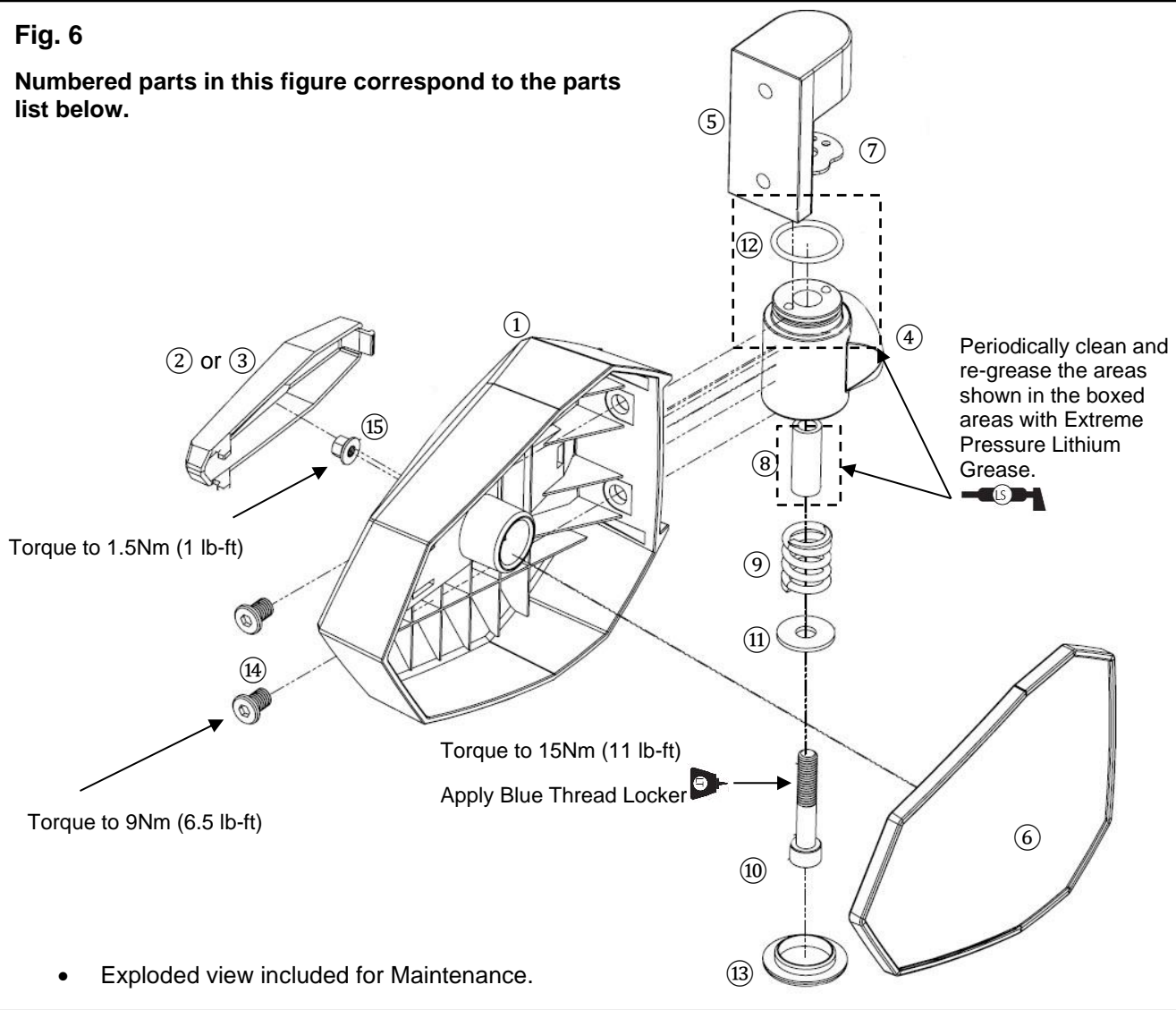


Fig. 6

Numbered parts in this figure correspond to the parts list below.



B4M-F62A0-V0 Side Mirror Kit			Qty per side
①	B4M-F841U-V0	Mirror Housing	1
②	B4M-E4412-V0	Yamaha Logo Cap, LH	1
③	B4M-E4422-V0	Yamaha Logo Cap, RH	1
④	*	Spring Housing	1
⑤	*	Mirror Housing Mount	1
⑥	B4M-F628A-V0	Mirror with Mirror Base	1
⑦	*	Detent Disc	1
⑧	*	Aluminum Collar	1
⑨	*	Spring	1
⑩	90110-18104	M8x45mm Hex Socket Bolt	1
⑪	90201-08855	Washer	1
⑫	*	25mm ID, 2.5mm THK, Buna-N O-Ring	1
⑬	B4M-E8323-V0	Spring Cap	1
⑭	*	M8x12mm Socket Head Bolt	2
⑮	90179-05X01	M5 Nylon Flange Nut	1

MAINTENANCE:

Periodically, check torque on all hardware. If loose hardware is found, re-torque to specification. Periodically clean and re-grease the areas shown in the boxed areas with Extreme Pressure Lithium Grease (Fig. 6).

CARE AND CLEANING:

Clean painted metal parts with a clean soft cloth and mild soap and water solution. Rinse and dry.

CUSTOMER SERVICE:

For further information see your Yamaha dealer.

ESTIMATED TIME TO INSTALL: 0.5 HRS.